

720P HD Camcorder Manual

(Ball-point pen Type)



Remark: This picture only for reference

A. Introduction

Thanks for purchasing this product. It is equipped with various practical functions integrating digital photography, video recorder and audio recorder function, with fashionable and dainty appearance, stable and outstanding quality, wide and diversified purposes. It will bring you the new and memorable experiences of use and is the indispensable tool for you.

The functions of this machine include high definition, video recording, high definition photography, quality audio record, PC camera, and movable disk.

The characteristics of this machine include various functions, various purpose, fashionable appearance, outstanding video recording effect, handy and portable, easy use, stability, reliability and rapid response, etc.

This machine is applicable for the purposes of reporter interview, wonderful snap shoot, emergency record, living fragment record, recreation record, sports record, aided teaching record, family security monitoring, criminal investigation and evidence-collecting for legal purpose, landscape record during travel, outdoors exploration record and backing memory, etc.

B. Product Profile



Remark: This picture only for reference

NO	Name	Description
1	Operation key	It's a multi-functional key with different functions in different modes and states, including power-on, power-off, start to record video, stop recording video, take photos, start to record audio and stop recording audio.
2	Camera	Used to catch image signals.
3	Mic	Used to catch the audio signals.
4	Indicator lamps	There are three built-in red, green and blue indicator lamps, three lamps in three colors may indicate the different operating states of products in different combination modes.
5	Mode Switch	Used to switch over the operating modes.
6	Standard 4 Pin USB	The interface for connecting the data line and power cord.

C. Usage

1. Startup and Power-off:

1.1 Startup

- a. Press OPERATION KEY (part 1) for 2 seconds and then release it.
- b. The power of product is turned on, the GREEN lamp will turn on and the product will enter into the initialization status.
- c. The GREEN lamp will turn off when the initialization is completed.
- d. After startup, the device will enter into the default recording function standby status and the RED lamp will turn on.
- e. Startup is completed.

Note: The startup of this machine is similar to that of computer with a startup course, never make any operation during this course till the startup is completed. The time duration of startup initialization depends on the capacity of memory.

1.2 Power-off

- a. Press OPERATION KEY (part 1) for 2 seconds and then release it.
- b. The status indicator lamps will turn off to complete power-off.

Note: If the product is working when you turn off it, The system will automatically save the files being recorded at present and power off.

2. Switch over the Operating Modes

- a. Change the status of MODE SWITCH(part 5) in startup status of this product to switch over the operating modes.
- b. When the MODE SWITCH is in position 1, The device enter the video record mode, The RED lamp will turn on. When the MODE SWITCH is in position 2, The device enter the photograph mode, The BLUE lamp will turn on. When the MODE SWITCH is in a position 3, The device enter the audio record mode, The GREEN lamp will turn on.
- c. If operating mode is switched over when the product is used to record video, take pictures or record the system will automatically save the files being recorded at present and then switch over to the next operating mode.

3. Video Record

- a. It will enter into the default video record mode after startup or switch over to video record mode by the MODE SWITCH.
- b. The RED light will keep on when the device is in standby status of this mode.
- c. Press the OPERATION KEY shortly to start the video record and the RED lamp will turn from constantly ON status to even and slow flicker status.
- d. Press OPERATION KEY shortly again to stop video recording and save the file being recorded, the RED light will turn from flicker status to constantly ON status.

Note: To guarantee the size and safety of photography files, the system will automatically save the file once every 30 minutes and continue to record video. Please make sure the camera not being blocked with sufficient illumination, keep the product body vertical and stable, with over

50cm distance with the objects to be recorded to get the images with right direction, natural colors, clear images and stable images. Never block the microphone sound gate to ensure the sound recording effect.

4. Take Pictures

- a. Switch over the device to photograph mode.
- b. The BLUE light will keep on when the device is in standby status of this mode.
- c. It will take one picture and the BLUE light will flicker once every time the OPERATION KEY is pressed shortly.

Note: Please make sure the camera not being blocked with sufficient illumination, keep the product body vertical and stable, with over 50cm distance with the objects to be recorded to get the images with right direction, natural colors, clear images and stable images.

5. Audio Record

- a. Switch over the device to audio record mode.
- b. The GREEN light will keep on when the device is in standby status of this mode.
- c. Press the OPERATION KEY shortly to start the audio record and the GREEN lamp will turn from constantly ON status to even and slow flicker status.
- d. Press OPERATION KEY shortly again to stop audio recording and save the file being recorded, the GREEN light will turn from flicker status to constantly ON status.

Note: To guarantee the size and safety of photography files, the system will automatically save the file once every 60 minutes and continue to record audio. Never block the microphone sound gate to ensure the sound recording effect.

6. PC Camera

When the unit is in this mode, you can chat with your friends on line with web camera, or hold the net-conference with your co-workers of company; or you can apply the novel and interesting purposes like shooting posters, etc. via the Windows programs provided by any third party. The method of entering into computer web camera mode is shown as below.

- a. Turn off the device at first. Keep the OPERATION KEY is pressed and use the usb data cable to connect your product to computer USB port.
- b. Release the OPERATION KEY after the device enter the PC Camera mode.
- c. Enter the PC Camera mode, Open MY COMPUTER, the icon of web cam will appear on the screen to indicate that the web cam function of product is started up normally.

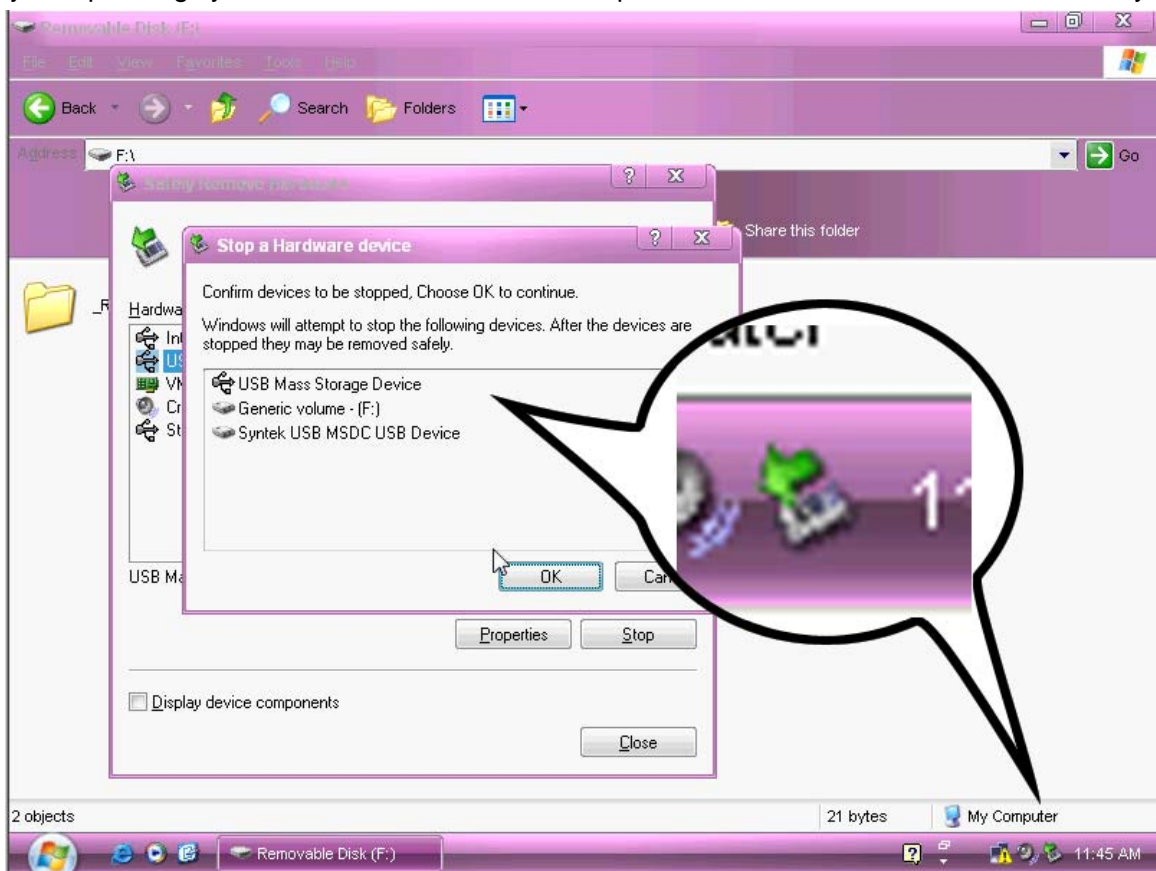
Note: Not always that the computer can detect web cam function due to the computer configuration or the system differences. If the product cannot enter into web cam mode, but into the movable disk mode occasionally, please remove this unit, start up this unit and re-connect it to the computer. If you just use the computer web cam function of this machine on your computer for the first time, please install the web cam driver attached to the floppy disk or provided by the distributor; to prevent this product from being damaged, please connect one end of data line to the computer before connecting it to the computer, connect the other end of data line to the computer. Temporarily, the computer web cam function of this unit can only support WINDOWS operating system.

7. Movable disk

This unit may be used as a movable disk, with the method of usage shown as below.

- Turn off the device, connect the device to the computer with USB data cable, the movable disk icon will pop up in the computer.
- The directory for saving video file is *Disk\ _REC\100MEDIA.
- To dismantle the device, please click the movable device management icon at the right lower corner to remove this movable memory device and after the computer has confirmed to disconnect the hardware safety, disconnect the device and computer.

Note: The time for computer to identify the movable disk is relative to the computer configuration, operating system and memory capacity, please wait patiently during this course and never operate the unit, which may affect the hardware identification. If the movable disk cannot be recognized for a long time, please try to re-connect; if it is not recognized yet, please confirm if your operating system, motherboard driver, USB port and connection line can work normally.



8. Charge

Connect the product to the power adaptor or computer to charge it. The RED light will flicker slowly when the battery is being charged and will keep on when the battery is charged completely.

Note: This unit is built in with high capacity polymer lithium battery without memory effect, which may be charged during use. But for the first five times of use, please run out the battery power and then charge to the full to activate the highest capacity of battery and obtain the standard working hours; to maximize the battery power storage capacity, please continue to charge for 30 minutes to 1 hour when the indicator lamp indicates the full charging status upon charging every time. Please make sure that the power supply complies with the standard USB power supply specifications.

9. FAQs

a. Q: Why the indicator lamp does not respond after I have pressed the startup key on my device for a long time?

A: Please check if the device power is run out and it's recommended to connect the power adaptor, computer or standby power source to charge the product, then try if it may be powered on normally.

b. Q: Why the RED, BLUE and GREEN lights on my product will flicker rapidly and simultaneously and then the product will automatically power off 10 seconds later?

A: When it happens during operation, it indicates that the memory space runs out, the device will automatically save the file being recorded at present and it indicates the auto power-off around 10 seconds. If you shall continue to record video files, please delete the files you don't need again from the computer.

c. Q: Why the RED, BLUE and GREEN lights on my product will flicker alternatively and then the product will automatically power off 10 seconds later?

A: It indicates the insufficient battery power, it's recommended to use this player after it is charged completely.

d. Q: What shall I do if my product cannot respond for more than 1 minutes and no keypad can respond?

A: You need reset the device. Please plug the device into the computer or charger, and then keep the OPERATION KEY is pressed and disconnect the usb

D. Parameters

Item	Parameters
Video format	AVI
Video encoding	M-JPEG
Video resolution	1280*720
Media playing software	Attached software of the operating system or Mainstream audio and video media playing software, recommend Kmpayer
Picture format	JPG
Udisk supporting OS	Windows me/2000/xp/2003/vista/7, Mac OS10.4 (uncertainty, depends on the computer model)
PC Camera	Windows me/2000/xp/2003/vista/7
charge pressure	DC-5V
Interface type	4 Pin USB
Storage support	Nand flash
Battery type	high-capacity lithium polymer

E. Warning

- **Application:** Please strictly abide relevant regulations and laws. This product should not be used for any illegal purposes. The user is fully responsible for its using purpose.
- **Battery:** If do not use this recording function after long time, please charged it fully before using.

- **File security:** This product is not a professional storage device. It does not guarantee the integrity and security of saved files. Please back up your important documents on the computer or other storage device timely.
- **Video quality:** This product is not a professional video recording device. It Does not guarantee the effect of the video file to have the professional quality
- **Operating temperature:** 0—40°C. For the extension of life, it is best used at room temperature.
- **Shooting brightness:** Do not expose the camera directly to strong light, such as the sun light, to avoid damage to optical devices.
- **Cleaning:** Do not use it under the environment with high dust density to avoid the contamination of camera lens or other components.